

To:

Won't ewe
be my
Valentine?



From:

FamilyFun.com

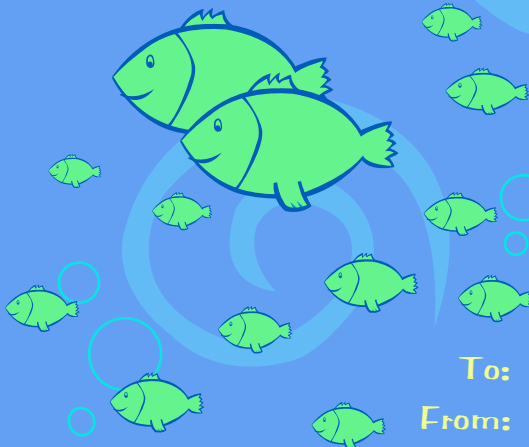
Buzzing by with
a Valentine's Hi!



To:
From:

FamilyFun.com

Happy Valentine's Day
So glad you're in my school!



To:
From:

FamilyFun.com

TO:



I'M BANANAS
OVER YOU!

FROM:

FamilyFun.com